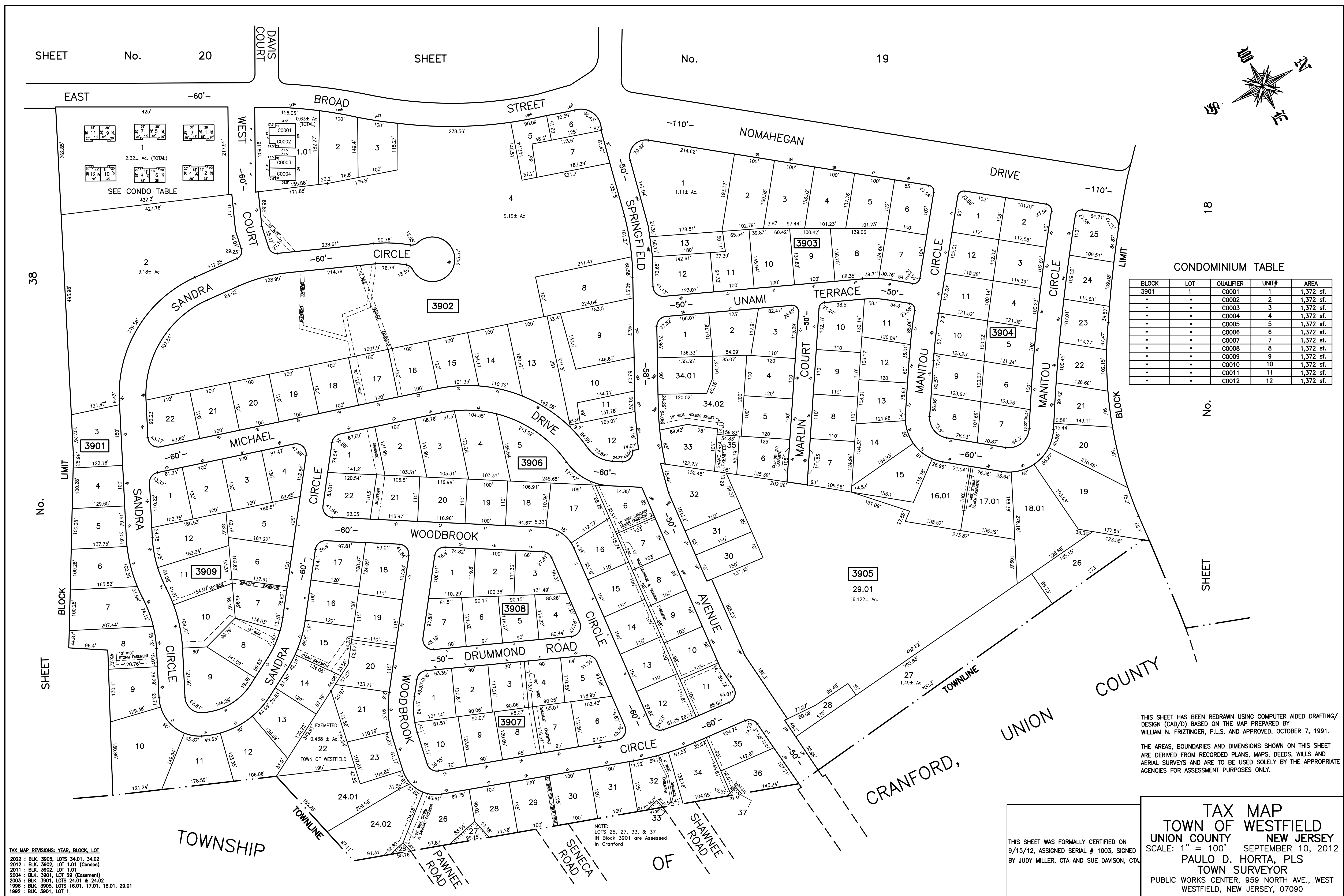
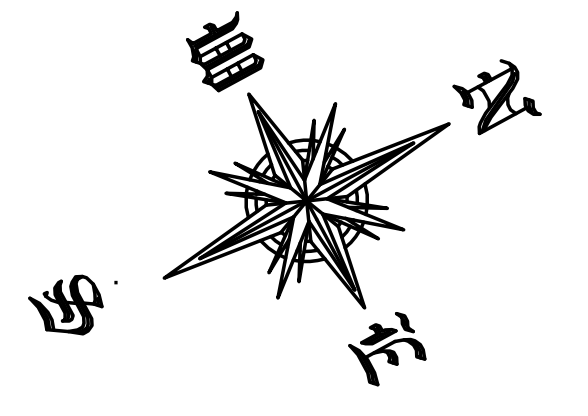


SHEET No. 20

SHEET No. 19



CONDOMINIUM TABLE

BLOCK	LOT	QUALIFIER	UNIT#	AREA
3901	1	C0001	1	1,372 sf.
"	"	C0002	2	1,372 sf.
"	"	C0003	3	1,372 sf.
"	"	C0004	4	1,372 sf.
"	"	C0005	5	1,372 sf.
"	"	C0006	6	1,372 sf.
"	"	C0007	7	1,372 sf.
"	"	C0008	8	1,372 sf.
"	"	C0009	9	1,372 sf.
"	"	C0010	10	1,372 sf.
"	"	C0011	11	1,372 sf.
"	"	C0012	12	1,372 sf.

TAX MAP REVISIONS: YEAR, BLOCK, LOT

2022 : BLK. 3905, LOTS 34.01, 34.02
 2012 : BLK. 3902, LOT 1.01 (Condo)
 2011 : BLK. 3902, LOT 1.01
 2004 : BLK. 3901, LOT 29 (Easement)
 2003 : BLK. 3901, LOTS 24.01 & 24.02
 1996 : BLK. 3905, LOTS 16.01, 17.01, 18.01, 29.01
 1992 : BLK. 3901, LOT 1

NOTE:
 LOTS 25, 27, 33, & 37
 IN Block 3901 are Assessed
 in Cranford

THIS SHEET HAS BEEN REDRAWN USING COMPUTER AIDED DRAFTING/ DESIGN (CAD/D) BASED ON THE MAP PREPARED BY WILLIAM N. FRITZINGER, P.L.S. AND APPROVED, OCTOBER 7, 1991.

THE AREAS, BOUNDARIES AND DIMENSIONS SHOWN ON THIS SHEET ARE DERIVED FROM RECORDED PLANS, MAPS, DEEDS, WILLS AND AERIAL SURVEYS AND ARE TO BE USED SOLELY BY THE APPROPRIATE AGENCIES FOR ASSESSMENT PURPOSES ONLY.

TAX MAP
TOWN OF WESTFIELD
UNION COUNTY
NEW JERSEY
 SCALE: 1" = 100'
 SEPTEMBER 10, 2012
PAULO D. HORTA, PLS
TOWN SURVEYOR
 PUBLIC WORKS CENTER, 959 NORTH AVE., WEST
 WESTFIELD, NEW JERSEY, 07090