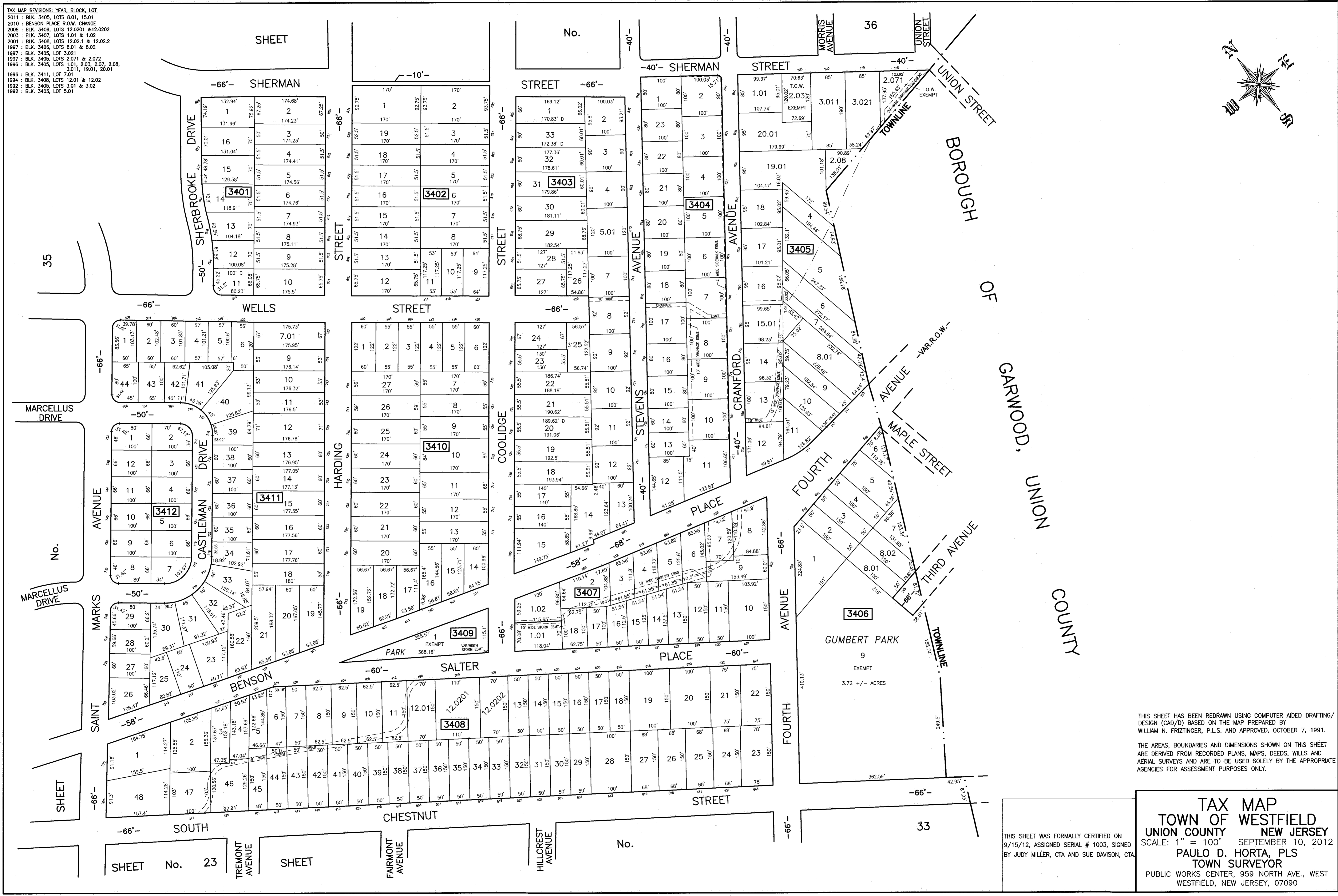


TAX MAP REVISIONS: YEAR, BLOCK, LOT

2011 : BLK. 3405, LOTS 8.01, 15.01
 2010 : BENSON PLACE R.O.W. CHANGE
 2008 : BLK. 3408, LOTS 12.0201 & 12.0202
 2003 : BLK. 3407, LOTS 1.01 & 1.02
 2001 : BLK. 3408, LOTS 12.02.1 & 12.02.2
 1997 : BLK. 3406, LOTS 8.01 & 8.02
 1997 : BLK. 3405, LOT 3.021
 1997 : BLK. 3405, LOTS 2.071 & 2.072
 1996 : BLK. 3405, LOTS 1.01, 2.03, 2.07, 2.08,
 3.011, 19.01, 20.01
 1996 : BLK. 3411, LOT 7.01
 1994 : BLK. 3408, LOTS 12.01 & 12.02
 1992 : BLK. 3405, LOTS 3.01 & 3.02
 1992 : BLK. 3403, LOT 5.01



THIS SHEET HAS BEEN REDRAWN USING COMPUTER AIDED DRAFTING/ DESIGN (CAD/D) BASED ON THE MAP PREPARED BY WILLIAM N. FRIZTINGER, P.L.S. AND APPROVED, OCTOBER 7, 1991.

THE AREAS, BOUNDARIES AND DIMENSIONS SHOWN ON THIS SHEET ARE DERIVED FROM RECORDED PLANS, MAPS, DEEDS, WILLS AND AERIAL SURVEYS AND ARE TO BE USED SOLELY BY THE APPROPRIATE AGENCIES FOR ASSESSMENT PURPOSES ONLY.

TAX MAP
TOWN OF WESTFIELD
UNION COUNTY
NEW JERSEY

SCALE: 1" = 100' SEPTEMBER 10, 2012
PAULO D. HORTA, PLS
TOWN SURVEYOR
 PUBLIC WORKS CENTER, 959 NORTH AVE., WEST WESTFIELD, NEW JERSEY, 07090

THIS SHEET WAS FORMALLY CERTIFIED ON 9/15/12, ASSIGNED SERIAL # 1003, SIGNED BY JUDY MILLER, CTA AND SUE DAVISON, CTA