

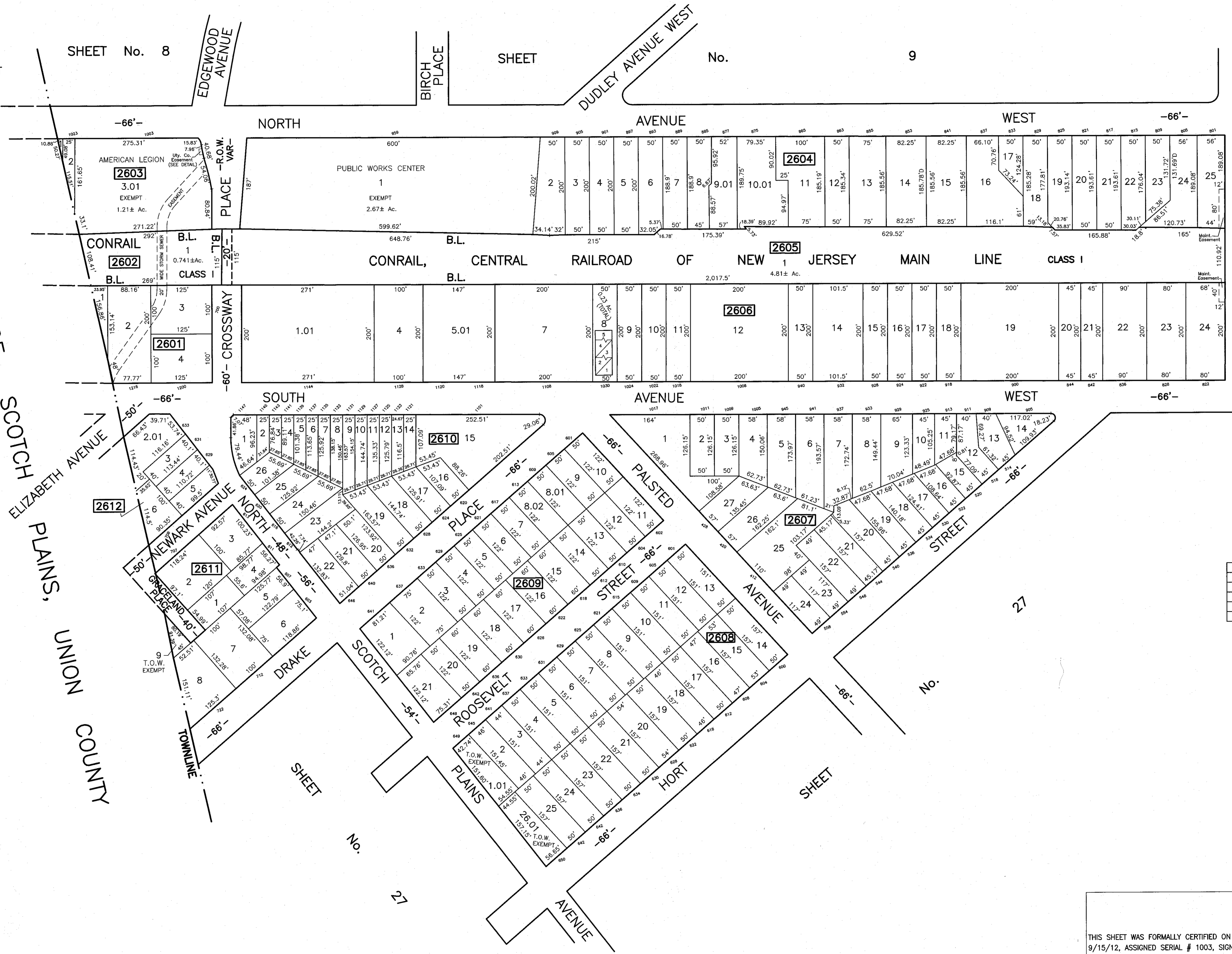
SHEET No. 8

SHEET

No.

9

TOWNSHIP OF SCOTCH PLAINS,
 UNION COUNTY



PARKWAY
 SHEET No. 25

CONDOMINIUM TABLE

BLOCK	LOT	QUALIFIER	UNIT# FLR	AREA
2606	8	C0001	1-1st FLR.	1,039 sf.
"	"	C0002	2-1st FLR.	1,104 sf.
"	"	C0003	3-2nd FLR.	1,138 sf.
"	"	C0004	4-2nd FLR.	1,170 sf.
"	"	C0005	5-3rd FLR.	1,760 sf.

THIS SHEET HAS BEEN REDRAWN USING COMPUTER AIDED DRAFTING/ DESIGN (CAD/D) BASED ON THE MAP PREPARED BY WILLIAM N. FRITZINGER, P.L.S. AND APPROVED, OCTOBER 7, 1991.

THE AREAS, BOUNDARIES AND DIMENSIONS SHOWN ON THIS SHEET ARE DERIVED FROM RECORDED PLANS, MAPS, DEEDS, WILLS AND AERIAL SURVEYS AND ARE TO BE USED SOLELY BY THE APPROPRIATE AGENCIES FOR ASSESSMENT PURPOSES ONLY.

TAX MAP REVISIONS: YEAR, BLOCK, LOT

2018 : BLK. 2606, LOT 1.01
 2017 : BLK. 2609, LOTS 8.01, 8.02
 2015 : BLK. 2604, LOTS 9.01, 10.01
 2000 : BLK. 2603, LOT 3.01
 1998 : BLK. 2606, LOT 5.01
 1998 : BLK. 2612, LOT 2.01
 1996 : BLK. 2608, LOTS 1.01 & 26.01

THIS SHEET WAS FORMALLY CERTIFIED ON 9/15/12, ASSIGNED SERIAL # 1003, SIGNED BY JUDY MILLER, CTA AND SUE DAVISON, CTA

TAX MAP
TOWN OF WESTFIELD
UNION COUNTY NEW JERSEY
 SCALE: 1" = 100' SEPTEMBER 10, 2012
PAULO D. HORTA, PLS
TOWN SURVEYOR
 PUBLIC WORKS CENTER, 959 NORTH AVE., WEST
 WESTFIELD, NEW JERSEY, 07090