



SHEET No. 10

COWPERTHWAIT PLACE

SHEET

No.

25

ELM STREET

SHEET

CENTRAL AVENUE

No.

31

ST. PAUL STREET

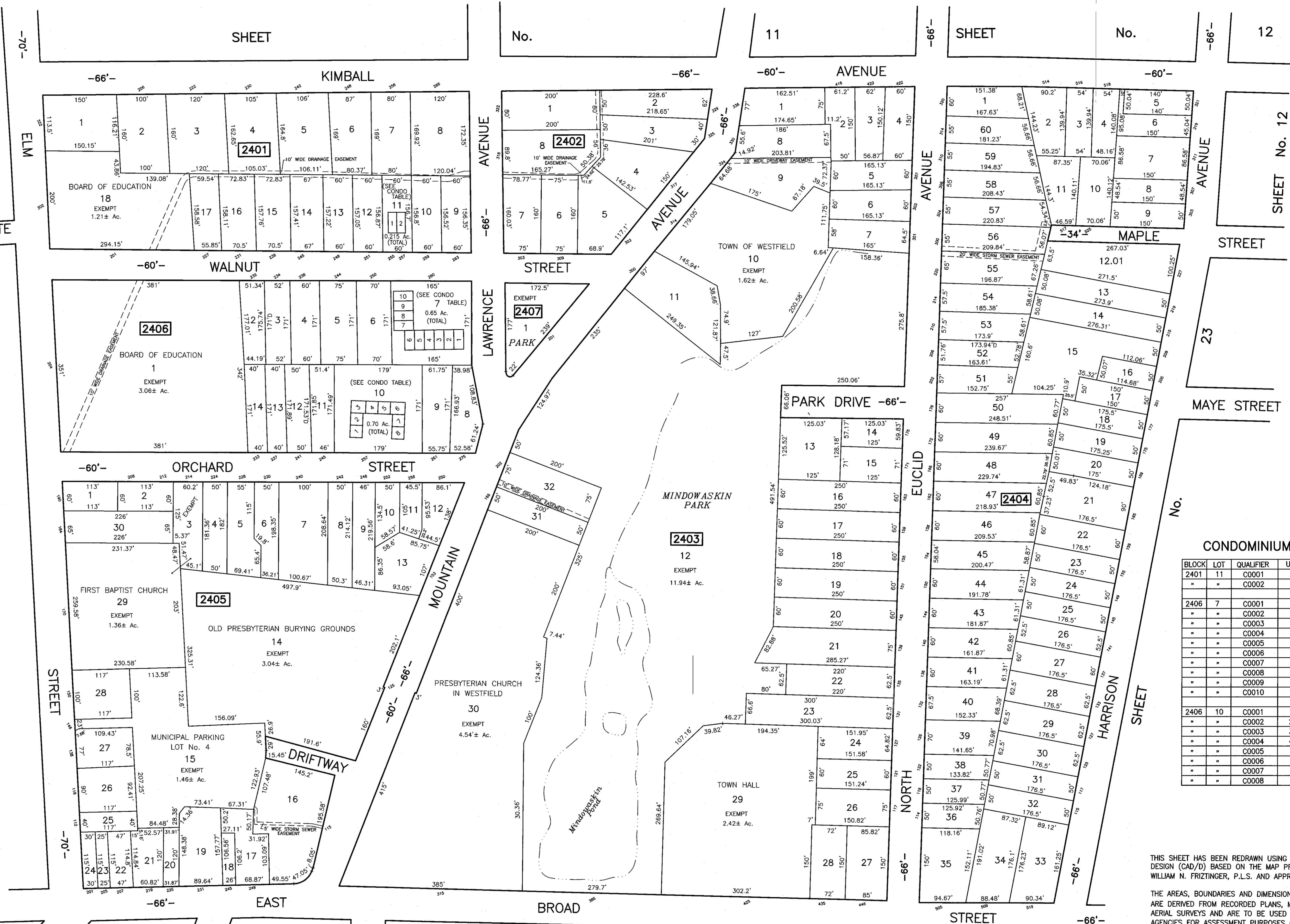
SOUTH EUCLID AVENUE

SHEET No. 23

THIS SHEET WAS FORMALLY CERTIFIED ON 9/15/12, ASSIGNED SERIAL # 1003, SIGNED BY JUDY MILLER, CTA AND SUE DAVISON, CTA

TAX MAP TOWN OF WESTFIELD UNION COUNTY NEW JERSEY SCALE: 1" = 100' SEPTEMBER 10, 2012 PAULO D. HORTA, PLS TOWN SURVEYOR PUBLIC WORKS CENTER, 959 NORTH AVE., WEST WESTFIELD, NEW JERSEY, 07090

TAX MAP REVISIONS: YEAR, BLOCK, LOT 2014 : BLK. 2401, LOT 11 (CONDOS) 2006 : BLK. 2404, LOT 12.01 1992 : BLK. 2406, LOT 7



CONDOMINIUM TABLE

BLOCK	LOT	QUALIFIER	UNIT#	AREA
2401	11	C0001	1	1,494 sf.
"	"	C0002	2	1,494 sf.
2406	7	C0001	1	1,050 sf.
"	"	C0002	2	1,050 sf.
"	"	C0003	3	1,120 sf.
"	"	C0004	4	1,120 sf.
"	"	C0005	5	1,050 sf.
"	"	C0006	6	1,050 sf.
"	"	C0007	7	1,050 sf.
"	"	C0008	8	1,050 sf.
"	"	C0009	9	1,050 sf.
"	"	C0010	10	1,050 sf.
2406	10	C0001	1	2,015 sf.
"	"	C0002	2	1,625 sf.
"	"	C0003	3	2,015 sf.
"	"	C0004	4	1,625 sf.
"	"	C0005	5	1,625 sf.
"	"	C0006	6	2,015 sf.
"	"	C0007	7	1,625 sf.
"	"	C0008	8	2,015 sf.

THIS SHEET HAS BEEN REDRAWN USING COMPUTER AIDED DRAFTING/DESIGN (CAD/D) BASED ON THE MAP PREPARED BY WILLIAM N. FRITZINGER, P.L.S. AND APPROVED, OCTOBER 7, 1991. THE AREAS, BOUNDARIES AND DIMENSIONS SHOWN ON THIS SHEET ARE DERIVED FROM RECORDED PLANS, MAPS, DEEDS, WILLS AND AERIAL SURVEYS AND ARE TO BE USED SOLELY BY THE APPROPRIATE AGENCIES FOR ASSESSMENT PURPOSES ONLY.