



SHEET

No.

16

AVENUE
BLOCK
LIMIT
SHEET

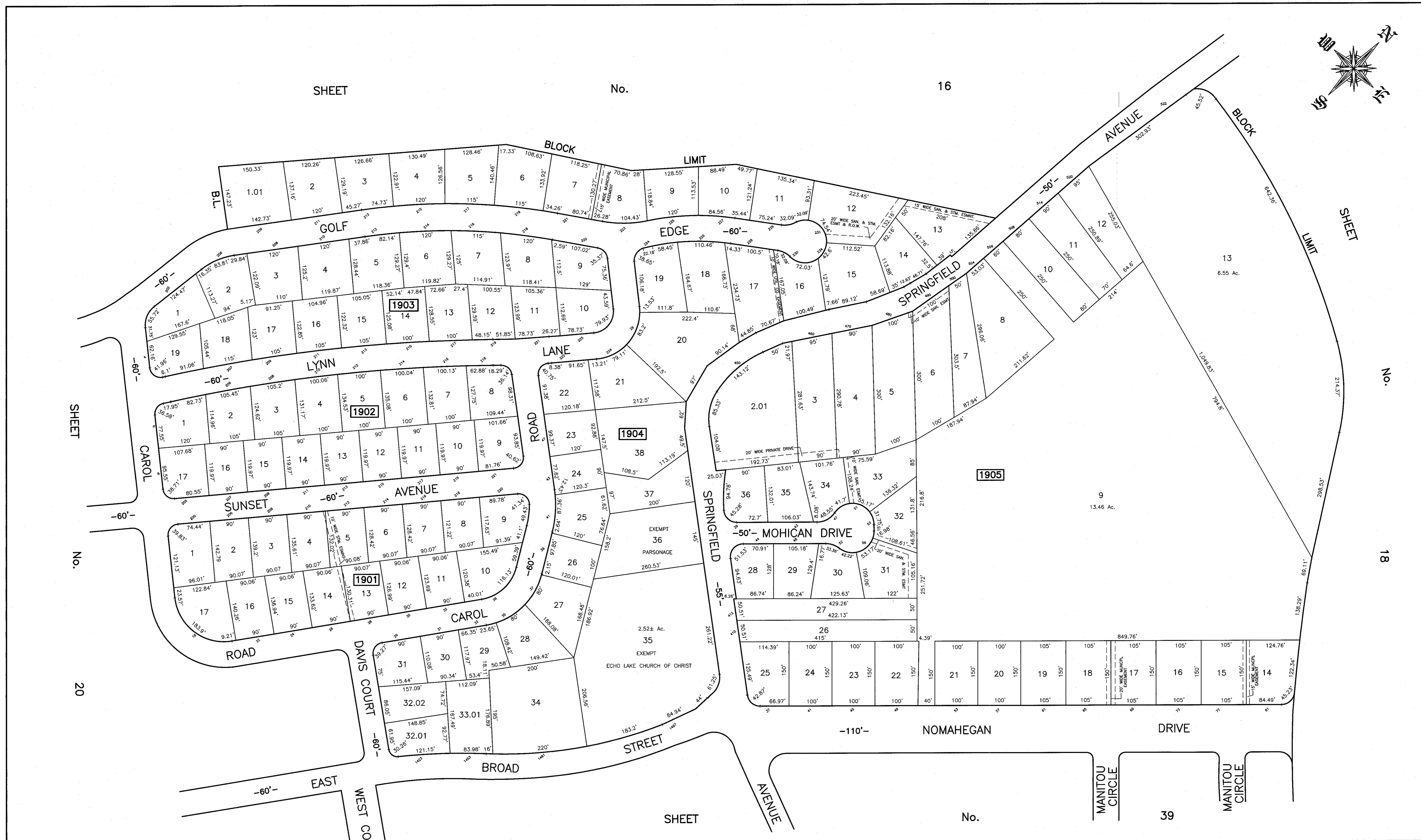
No.

18

SHEET

No.

39



TAX MAP REVISIONS: YEAR, BLOCK, LOT
2009 : BLK. 1905, LOT 2.01
2006 : BLK. 1904, LOTS 32.01, 32.02, 33.01
1992 : BLK. 1904, LOT 1.01

THIS SHEET HAS BEEN REDRAWN USING COMPUTER AIDED DRAFTING/ DESIGN (CAD/D) BASED ON THE MAP PREPARED BY WILLIAM N. FRITZINGER, P.L.S. AND APPROVED, OCTOBER 7, 1991.
THE AREAS, BOUNDARIES AND DIMENSIONS SHOWN ON THIS SHEET ARE DERIVED FROM RECORDED PLANS, MAPS, DEEDS, WILLS AND AERIAL SURVEYS AND ARE TO BE USED SOLELY BY THE APPROPRIATE AGENCIES FOR ASSESSMENT PURPOSES ONLY.

THIS SHEET WAS FORMALLY CERTIFIED ON 9/15/12, ASSIGNED SERIAL # 1003, SIGNED BY JUDY MILLER, CTA AND SUE DAVISON, CTA

TAX MAP
TOWN OF WESTFIELD
UNION COUNTY
NEW JERSEY
SCALE: 1" = 100'
SEPTEMBER 10, 2012
PAULO D. HORTA, PLS
TOWN SURVEYOR
PUBLIC WORKS CENTER, 959 NORTH AVE., WEST
WESTFIELD, NEW JERSEY, 07090