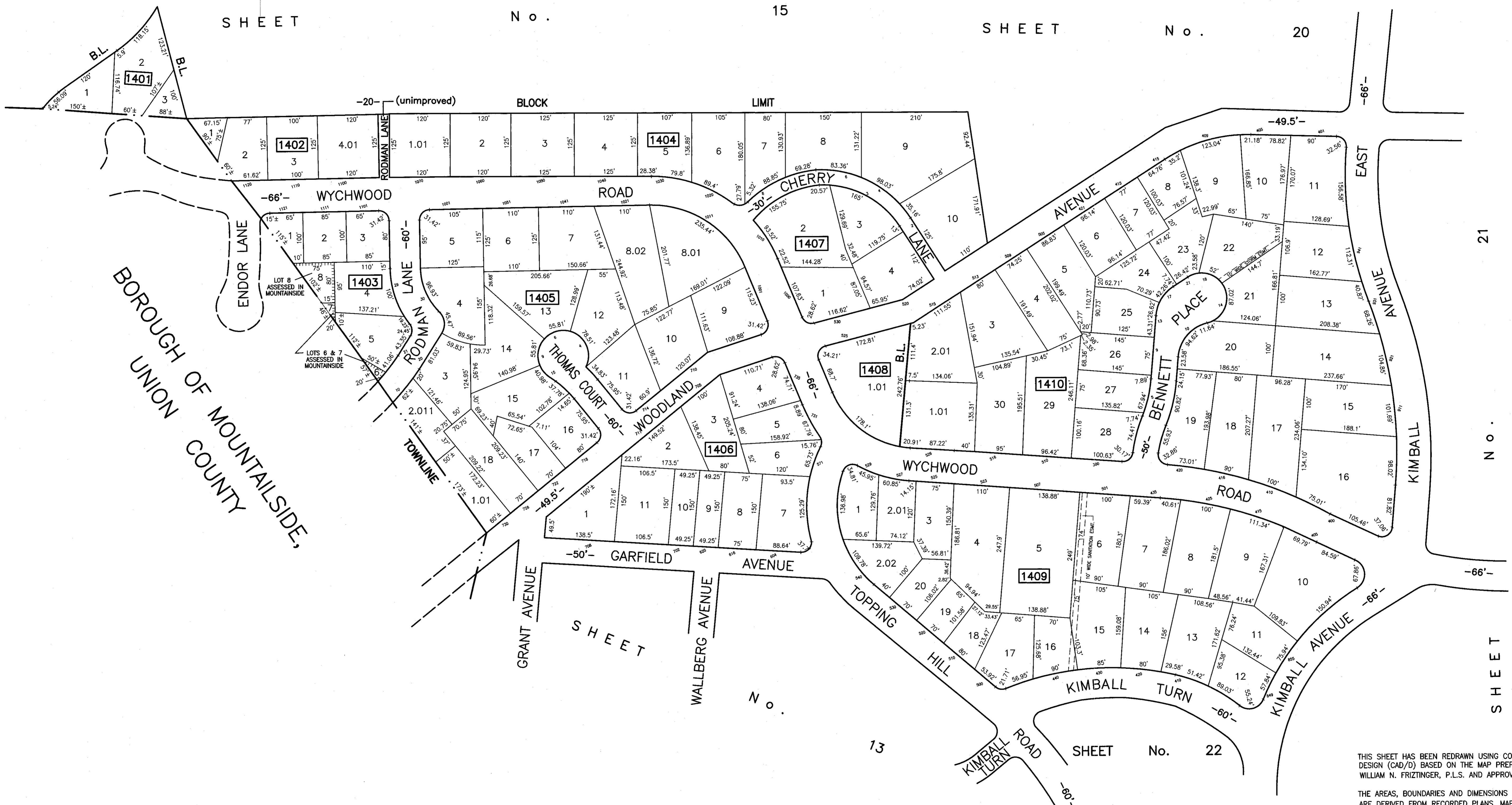




SHEET No. 15 SHEET No. 20



BOROUGH OF MOUNTAINSIDE,
UNION COUNTY

TAX MAP REVISIONS: YEAR, BLOCK, LOT
2017 : BLK. 1405, LOTS 8.01, 8.02
2009 : BLK. 1405, LOT 1.01 & 2.01
1998 : BLK. 1408, LOT 1.01,
BLK. 1410, LOTS 1.01, 2.01
1996 : BLK. 1402, LOT 4.01; BLK. 1404, LOT 1.01
1994 : BLK. 1409, LOTS 2.01 & 2.02

THIS SHEET WAS FORMALLY CERTIFIED ON
9/15/12, ASSIGNED SERIAL # 1003, SIGNED
BY JUDY MILLER, CTA AND SUE DAVISON, CTA

THIS SHEET HAS BEEN REDRAWN USING COMPUTER AIDED DRAFTING/
DESIGN (CAD/D) BASED ON THE MAP PREPARED BY
WILLIAM N. FRITZINGER, P.L.S. AND APPROVED, OCTOBER 7, 1991.

THE AREAS, BOUNDARIES AND DIMENSIONS SHOWN ON THIS SHEET
ARE DERIVED FROM RECORDED PLANS, MAPS, DEEDS, WILLS AND
AERIAL SURVEYS AND ARE TO BE USED SOLELY BY THE APPROPRIATE
AGENCIES FOR ASSESSMENT PURPOSES ONLY.

TAX MAP
TOWN OF WESTFIELD
UNION COUNTY
NEW JERSEY
SCALE: 1" = 100' SEPTEMBER 10, 2012
PAULO D. HORTA, PLS
TOWN SURVEYOR
PUBLIC WORKS CENTER, 959 NORTH AVE., WEST
WESTFIELD, NEW JERSEY, 07090